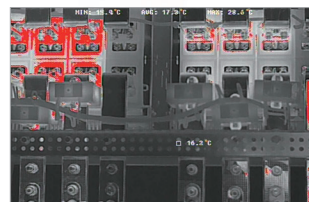
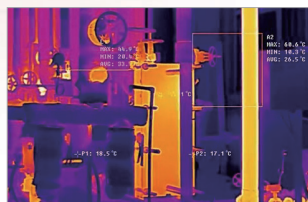
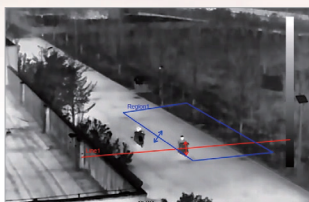




FC4 Series

Dual-Spectrum Bullet Camera

FC4T dual-spectrum bullet camera equipped a high-resolution, 12μm pixel pitch thermal detector with various lens options, and a 5MP visible light sensor. It supports tripwire/intrusion detection and it integrated temperature analysis methods and fire detection function. It can be used for perimeter protection and fire prevention in residential areas and commercial facilities.



12μm Uncooled Infrared Detector

Adopting the latest 12μm uncooled infrared detectors, integrated with advanced infrared imaging algorithms for better image quality.

Accurate Temperature Measurement

Measurement range from -20°C to 550°C, accuracy $\pm 2^{\circ}\text{C}$ or 2%.

Intelligent Alarm

Supports alarm linkage.

Dual-Spectrum Imaging

All-weather, 24/7 security monitoring with dual thermal&visible light imaging.

Intelligent Video Analysis

Support tripwire/intrusion detection, as well as intelligent detection of fire point.

Platform Integration

Support ONVIF, provide SDK&demo for development; provide NVR and VMS software for application.

Specifications

Technical Specifications	FC435T				FC465T				
	Thermal Module								
Detector Type	VOx, uncooled FPA detector								
Spectral Range	8~14μm								
NETD	≤40mK(@25°C,F#1.0,25Hz)								
Resolution	384×288				640×512				
Pixel Pitch	12μm								
Focal Length	9.1mm	13mm	19mm	25mm	9.1mm	13mm	19mm	25mm	35mm
	Optical Module								
Sensor	5MP 1/2.8" Progressive Scan CMOS								
Focal Length	6mm	6mm	12mm	12mm	4mm	6mm	6mm	12mm	12mm
IR Distance	40m								
	Dual-Spectrum								
Bi-Spectrum Image Fusion	Support								
Picture in Picture	Support								
	Temperature Measurement								
Measurement Range	-20°C~ +550°C								
Measurement Accuracy	±2°C or ±2%								
Measurement Rules	Support 4 temperature measurement rules(fullframe, point, line, area)								
	Smart Function								
Fire Detection	Support								
VCA	Support Line crossing&Intrusion detection								
2-Way Audio	Support								
Linkage Action	Video/ Snapshot/Email/Alarm output/sound and light alarm								
	System Interface								
Power	DC 12V±25% / POE(802.3at)								
Network	1×RJ45 10M/100M self-adaptive interface								
Audio Input	1×input								
Audio Output	1×output								
Alarm Input	2×input								
Alarm Output	2×output								
Storage Interface	Micro SD card (up to 256G)								
Reset Button	Support								
RS485 Interface	1×RS485								
	General								
Work Environment	-40°C~ +70°C ; <95%RH								
Protection	IP66								
Power Consumption	≤8W								
Dimensions (mm)	319.5×121.5×103.6								
Weight	≤1.8kg								

Application Scenarios



Perimeter Protection



Charging Pile



Warehouse Security



Power Monitoring

Raythink Technology Co., Ltd.

✉ sales@raythink-tech.com

☎ +86-19806191838

🌐 www.raythink-tech.com

📍 Room 3002, Building 2, No.5 Wanshoushan Road, Fulaishan Street, Yantai Area of China (Shandong) Pilot Free Trade Zone

■ This manual is illustrative only. Technical specifications are subject to change without prior notice.