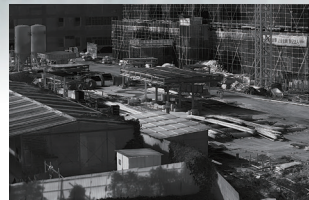




PC4 Series

Dual-Spectrum PTZ Camera

PC4 series is a compact solution that integrates HD visible light, infrared thermal imaging and PTZ system, with intelligent functions such as fire point detection, tripwire intrusion, and regional intrusion detection inside. It provides all-weather, 24/7 surveillance for scenarios such as perimeter surveillance, forest fire prevention and critical area protection.



12 μ m Uncooled Infrared Detector

Adopting the latest 12 μ m uncooled infrared detectors, integrated with advanced infrared imaging algorithms for better image quality.

Long-Range Detection

Supports 75mm and 100mm fixed-focus, as well as 25~75mm continuous zoom infrared lens to meet long-range detection needs.

Intelligent Video Analysis

Support tripwire/intrusion detection, as well as intelligent detection of fire point.

Dual-Spectrum Imaging

All-weather, 24/7 security monitoring with dual thermal&visible light imaging.

Intelligent Fire Detection Algorithm

Features an integrated intelligent fire detection algorithm for efficient and accurate monitoring, as well as reduced false alarms.

Platform Integration

Support ONVIF, provide SDK&demo for development; provide NVR and VMS software for application.

Specifications

| Technical Specifications | PC464A1 | PC4S4A1 |
|--------------------------|--|--------------|
| | Thermal Module | |
| Detector Type | VOx, uncooled FPA detector | |
| Spectral Range | 8~14μm | |
| NETD | ≤40mK(@25°C,F#1.0,25Hz) | |
| Resolution | 640×512 | 1280×1024 |
| Pixel Pitch | 12μm | |
| Focal Length | 25~75mm/75mm/100mm | 25~75mm/75mm |
| | Optical Module | |
| Sensor | 1/1.8" 4-megapixel CMOS image sensor | |
| Resolution | 2688×1520 | |
| Focal Length | 6~336mm/6~360mm | 6~300mm |
| | PTZ | |
| Pan | 360° continuous, 0.1°~100°/s | |
| Tilt | -90°~+40°, 0.1°~60°/s | |
| Scan Mode | Preset/Pattern Scan/Patrol Scan/ Linear Scan/Panorama Scan | |
| | Smart Function | |
| Fire Detection | Support | |
| VCA | Support Line Crossing&Intrusion detection | |
| Linkage Action | Video/ Snapshot/Email/Alarm output | |
| | System Interface | |
| Power | DC 24V±15% | |
| Network | 1×RJ45 10M/100M self-adaptive interface | |
| Audio Input | 1× input | |
| Audio Output | 1×output | |
| Alarm Input | 7× input | |
| Alarm Output | 2×output | |
| Storage Interface | Micro SD memory (maximum 256G) | |
| RS485 Interface | 1×RS485 | |
| | General | |
| Work Environment | -40°C~+70°C; <90%RH | |
| Protection | IP66 Standard; TVS 6000V Lightning Protection, Surge Protection and Voltage Transient Protection | |
| Power Consumption | 75W | |
| Dimensions (mm) | 250×472×360 | |
| Weight | 14kg | |

Application Scenarios



Forest Fire Prevention



River Monitoring



Perimeter Surveillance



Critical Infrastructure Protection

Raythink Technology Co., Ltd.

✉ sales@raythink-tech.com

☎ +86-19806191838

🌐 www.raythink-tech.com

📍 Room 3002, Building 2, No.5 Wanshoushan Road, Fulaishan Street, Yantai Area of China (Shandong) Pilot Free Trade Zone

■ This manual is illustrative only. Technical specifications are subject to change without prior notice.