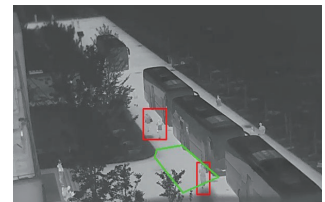
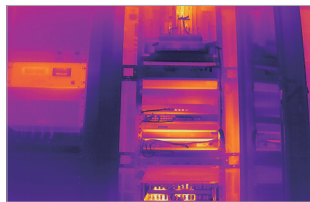




FC2 Series

Dual-Spectrum Bullet Camera

FC225T dual-spectrum bullet camera equipped a 256×192 resolution, $12\mu\text{m}$ pixel pitch thermal detector and a 5MP visible light sensor. It support tripwire/intrusion detection with AI human/vehicle classification algorithm. Meanwhile, it can analyze temperature and detect fire point. It can be used for perimeter protection and fire prevention in residential areas and commercial facilities.



12 μm Uncooled Infrared Detector

Adopting the latest $12\mu\text{m}$ uncooled infrared detectors, integrated with advanced infrared imaging algorithms for better image quality.



Accurate Temperature Measurement

Measurement range from -20°C to 550°C , accuracy $\pm 2^{\circ}\text{C}$ or 2%.



Intelligent Alarm

Supports alarm linkage for multiple events, as well as audible and visual alarms.



Dual-Spectrum Imaging

All-weather, 24/7 security monitoring with dual thermal&visible light imaging.



AI Target Recognition

Smart video content analysis, human/vehicle recognition on thermal channel for crossline/intrusion detection.



Platform Integration

Support ONVIF, provide SDK&demo for development; provide NVR and VMS software for application.

Specifications

Technical Specifications	FC225T		
	Thermal Module		
Detector Type	VOx, uncooled FPA detector		
Spectral Range	8~14μm		
NETD	≤40mK@25°C,F#1.0		
Resolution	256×192		
Pixel Pitch	12μm		
Focal Length	3.2mm	7mm	10mm
	Optical Module		
Sensor	5MP 1/2.8" CMOS		
Maximum Image Resolution	2560×1920		
Focal Length	4mm	8mm	12mm
IR Distance	30m		
	Dual-Spectrum		
Bi-Spectrum Image Fusion	Support		
	Temperature Measurement		
Measurement Range	-20°C~+550°C		
Measurement Accuracy	±2°C or ±2%		
Measurement Rules	Support 4 temperature measurement rules(fullframe, point, line, area)		
	Smart Function		
Fire Detection	Support		
VCA	Smart video content analysis, human/vehicle recognition on thermal channel for crossline/intrusion detection		
2-Way Audio	Support		
Linkage Action	Video/ Snapshot/Email/Alarm output/sound and light alarm		
	System Interface		
Power	DC 12V±25% / PoE(802.3af)		
Network	1×RJ45 10M/100M self-adaptive interface		
Audio Input	1×input		
Audio Output	1×output		
Alarm Input	2×input		
Alarm Output	1×output		
Storage Interface	Micro SD card (up to 256G)		
Reset Button	Support		
RS485 Interface	1×RS485		
	General		
Work Environment	-40°C~+70°C; <95%RH		
Protection	IP66		
Power Consumption	Max.< 6W		
Dimensions (mm)	265×99×87 (length can be adjusted to a minimum of 253mm)		
Weight	950g		

Application Scenarios



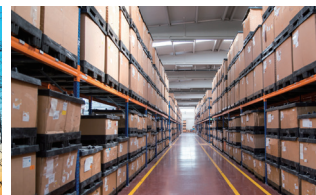
Perimeter Protection



Fire Prevention



Electrical Power Monitoring



Warehouse Security

Raythink Technology Co., Ltd.

✉ sales@raythink-tech.com

☎ +86-19806191838

🌐 www.raythink-tech.com

📍 Room 3002, Building 2, No.5 Wanshoushan Road, Fulaishan Street, Yantai Area of China (Shandong) Pilot Free Trade Zone

■ This manual is illustrative only. Technical specifications are subject to change without prior notice.